

Public Safety Assessment (PSA)
Reporting Period: May 26, 2017 – March 31, 2018

The Public Safety Assessment (PSA) was implemented in Dane County in April 2017 as part of a collaborative assessment project with the Laura and John Arnold Foundation (LJAF) and the Access to Justice Lab (A2J) at Harvard Law School. The PSA was developed by LJAF to assist pre-trial judges gauge the risk a defendant poses by helping to predict the likelihood that an individual will commit a new crime if released before trial, and to predict the likelihood that an individual will fail to return for a future court hearing. The PSA will also flag defendants who present an elevated risk of committing a violent crime.

Dane County is participating in a 2-year (2017-2019) randomized control experiment evaluation of the PSA during pretrial of both bond hearings and initial appearances. All cases that are reviewed at initial appearance will be randomly allocated into two groups: the experimental group for which a PSA will be made available to the court commissioner and a control group for which a PSA will be generated but not made available in court for commissioner review.

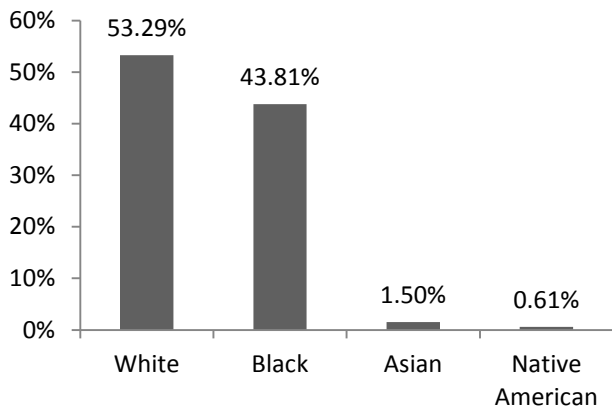
The following report is derived from arrests made during the reporting period. All data presented in this report should not be construed to provide any causal claims related to the PSA and subsequent court decisions. An Appendix is attached to provide comprehensive information on quarter and year-to-date statistics. As of this reporting period there have been:

- 3,132 PSAs generated
- 1,262 (40.29%) are assigned to the experimental group and 1,237 (39.50%) are assigned to the control group.
- PSAs are relevant for defendants who are *in custody* awaiting their initial appearance and does not apply to defendants who have posted bail.

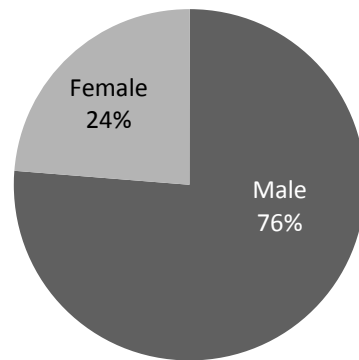
A. Demographic Characteristics

The average age at arrest is about 34 years old. The majority of defendants (2,935) are non-Hispanic or Latino (~94%), 184 (5.87%) defendants have Hispanic or Latino ethnicity.

Race¹

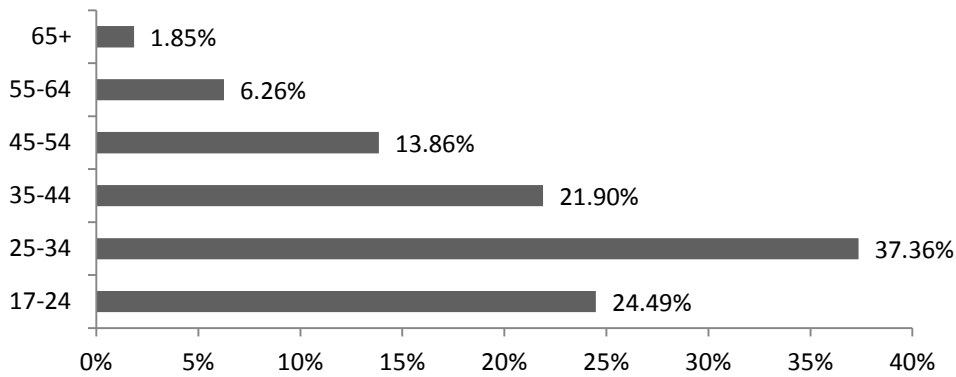


Gender



¹ Race is documented as unknown for 25 defendants.

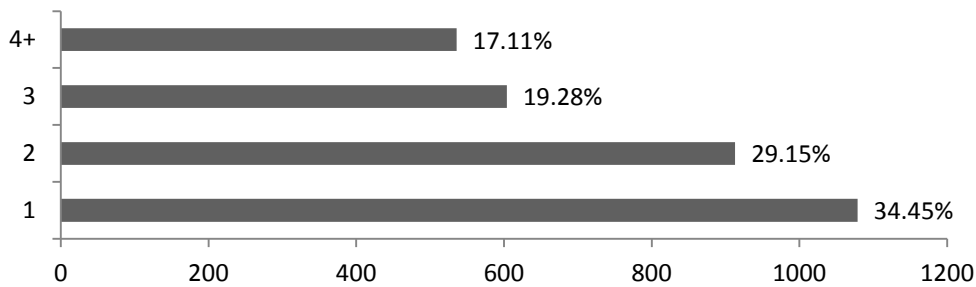
Age at Arrest



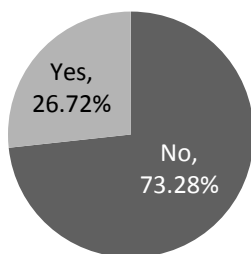
B. Charge Information

These measures are charges from arrest records over the reporting period. PSAs where the most serious charge type is a county ordinance or a non-criminal charge are not included in the study, yet are reported below. The maximum number of arrest charges for a defendant is 30.

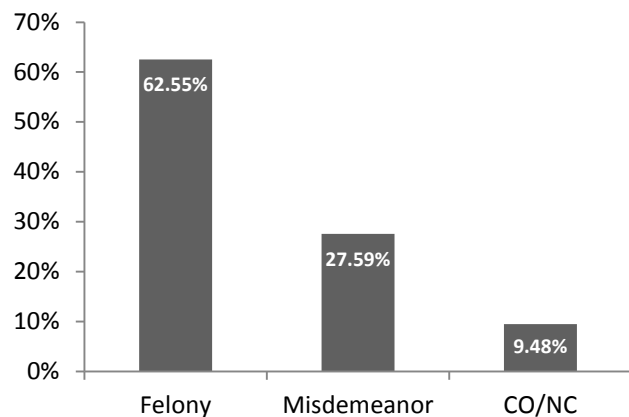
Number of Charges per Arrest



Are Any Charges Violent?



What is the most serious Charge Type?



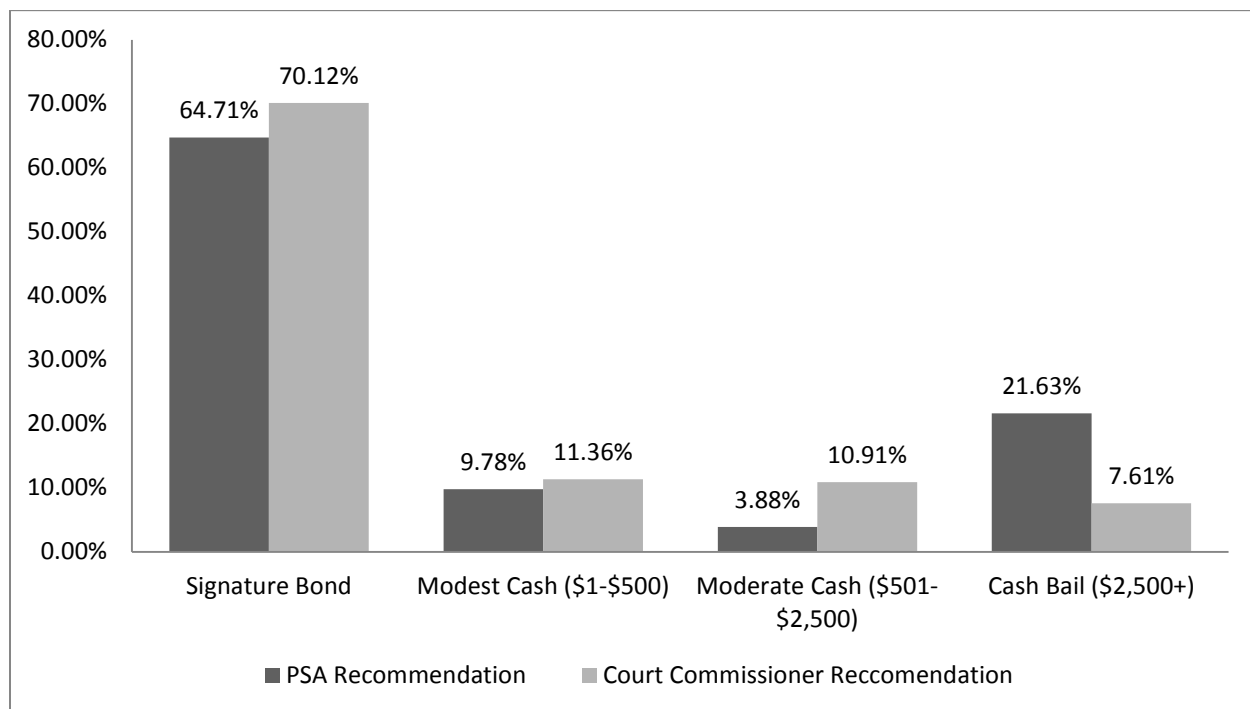
C. Hold at Arrest

This measure identifies whether a case has a hold at the time of the arrest. The vast majority of defendants (2,468-79%) had no hold. 581 (18.85%) defendants had a probation and parole hold at the time of arrest. 74 (2.36%) defendants had a hold from another Wisconsin county, while 21 (0.67%) had a hold from another state. 5 (0.16%) defendants had a federal hold. Defendants could have more than one hold at time of arrest.

D. PSA Recommendation & Release Decision by Court Commissioners

The PSA Recommendation indicates the PSAs' release recommendation based on risk factor calculations for defendants. The PSA recommendation is designed to assist decision making during initial appearance. This recommendation may or may not be followed and does not provide information on actual release decisions made by the court commissioner. No PSA recommendation was provided for 12 (0.38%) generated PSAs.

The figure below provides information on actual release decisions made by court commissioners as it compares to the PSA Recommendation. All individuals are in custody at time of initial appearance. No release decision was made for 1,134 (36.21%) PSAs generated and are not included in the graph below. The majority of cases with no release recommendation occur when a defendant was released prior to their first court date (29.89%), charges were reduced below a misdemeanor (30.86%), or for other reasons² (25.13%). Additional reasons could include dismissed cases or if a defendant has not yet had their initial appearance.



² Other reasons for cases with no release decision include: a defendant was released to appear, the District Attorney's office declined to prosecute, a defendant was released without bail, a defendant was referred to the deferred prosecution unit, or the individual paid cash bail.

Appendix
Study Period to Quarter End and 1st Quarter-2018 Comparison

Demographic Characteristics		Study Period to Quarter End (n=3132)		1 st Quarter, 2018 (n=865)	
Measure	Description	N	%	N	%
Age at Arrest	17-24	767	24.49%	205	23.70%
	25-34	1170	37.36%	320	36.99%
	35-44	592	18.90%	162	18.73%
	45-54	392	12.52%	109	12.60%
	55-64	161	5.14%	53	6.13%
	65+	50	1.60%	16	1.85%
Gender	Male	2389	76.28%	660	76.30%
	Female	743	23.72%	205	23.70%
Race	White	1669	53.29%	466	53.87%
	Black	1372	43.81%	368	42.54%
	Asian	47	1.50%	11	1.27%
	Native American	19	0.61%	4	0.46%
	Alaska Native	0	0.00%	0	0.00%
	Native Hawaiian/Pacific Islander	0	0.00%	0	0.00%
Ethnicity	Hispanic/Latino	184	5.87%	55	6.36%
	Non-Hispanic/Latino	2935	93.71%	805	93.06%

Charge Information		Study Period to Quarter End (n=3132)		1 st Quarter, 2018 (n=865)	
Measure	Description	N	%	N	%
Number of Charges	1	1079	34.45%	286	33.06%
	2	913	29.15%	260	30.06%
	3	604	19.28%	186	21.50%
	4+	536	17.11%	133	15.38%
Any Charge Violent	No	2335	74.55%	641	74.10%
	Yes	797	25.45%	224	25.90%

Hold at Arrest Information	Study Period to Quarter End (n=3132)		1 st Quarter, 2018 (n=865)	
	N	%	N	%
No Hold	2468	78.80%	641	74.10%
Probation and Parole	581	18.55%	195	22.54%
Other WI county	74	2.36%	21	2.43%

Other State	21	0.67%	11	1.27%
ICE	4	0.13%	1	0.12%
USMS	1	0.03%	0	0.00%
Other	0	0.00%	0	0.00%

PSA Recommendation	Study Period to Quarter End (n=3132)		1 st Quarter, 2018 (n=865)	
	N	%	N	%
Signature Bond	2019	64.46%	568	65.66%
Cash Bail (max)	675	21.55%	176	20.35%
Modest Cash Bail (\$1-\$500)	305	9.74%	88	10.17%
Moderate Cash Bail (\$501-\$2,500)	121	3.86%	28	3.24%
Not Provided (Null)	12	0.38%	5	0.58%

Court Commissioner Release Decision	Study Period to Quarter End (n=3132)		1 st Quarter, 2018 (n=865)	
	N	%	N	%
Signature Bond	1401	44.73%	360	41.62%
Cash Bail (max)	227	7.25%	63	7.28%
Modest Cash Bail (\$1-\$500)	218	6.96%	63	7.28%
Moderate Cash Bail (\$501-\$2,500)	152	4.85%	50	5.78%
Not Provided (Null)	1134	36.21%	329	38.03%